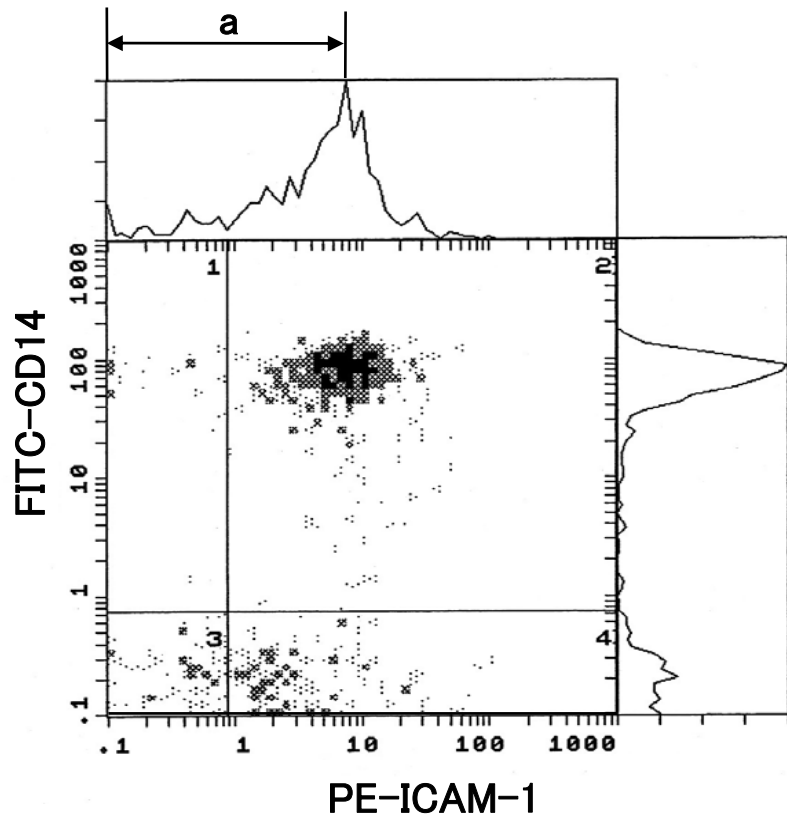
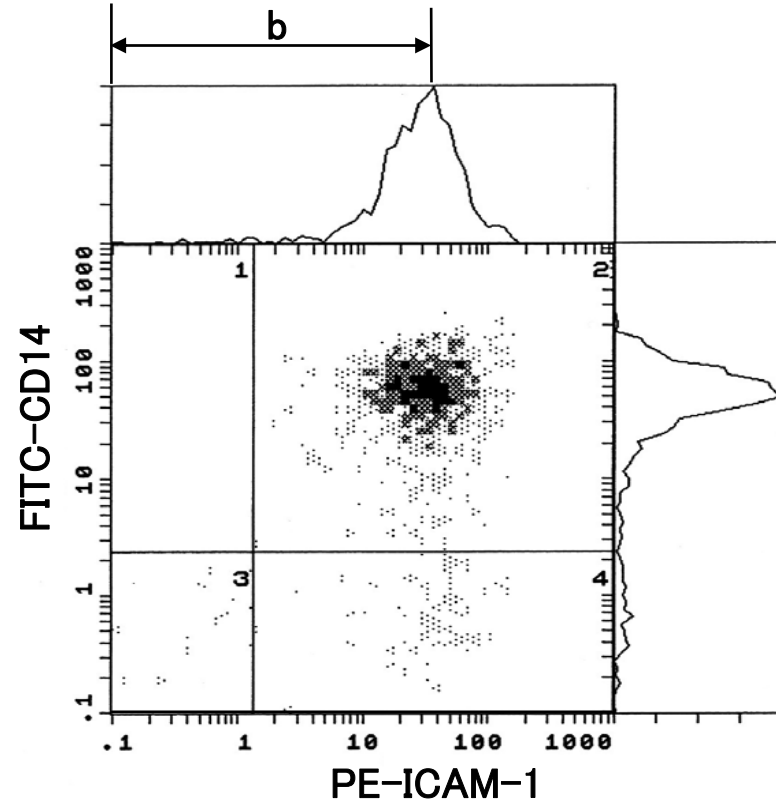


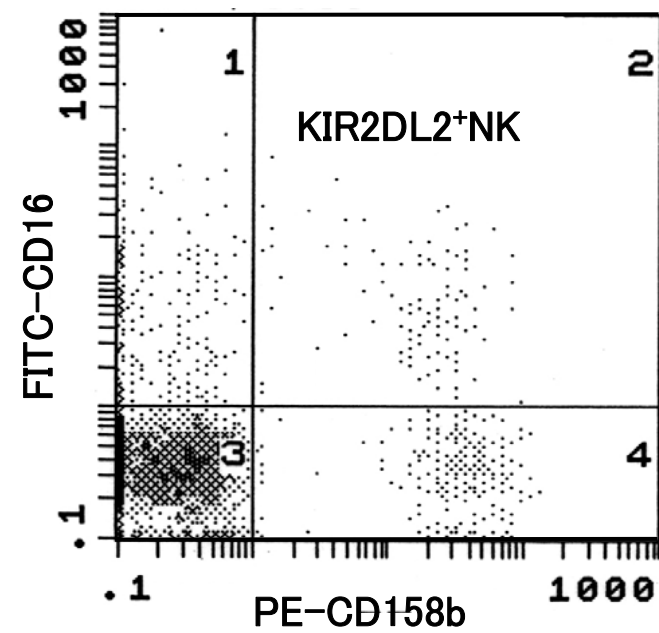
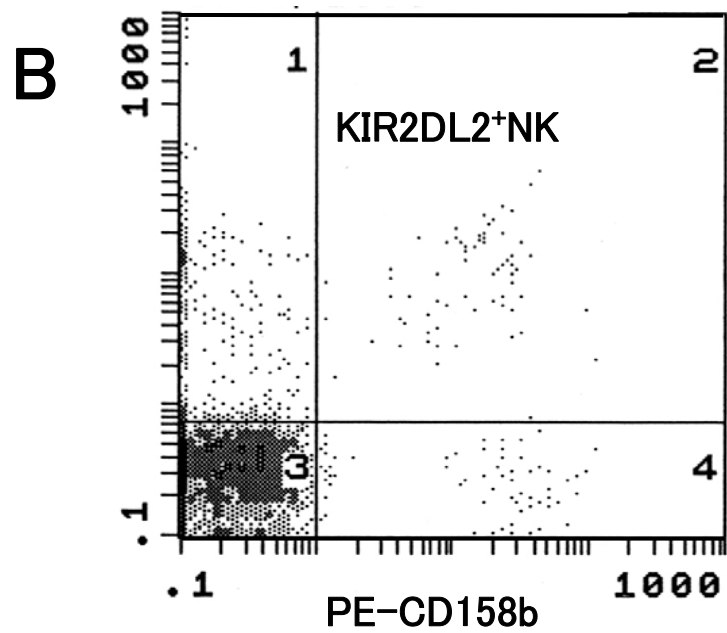
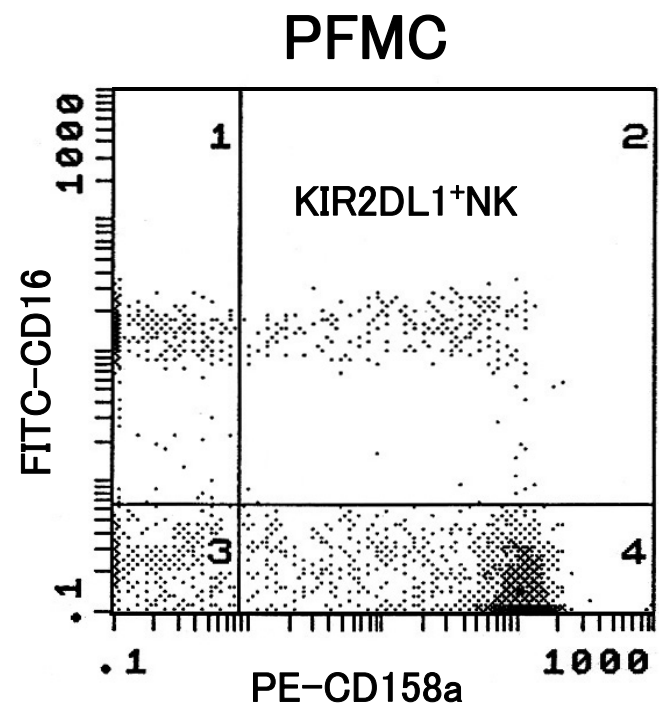
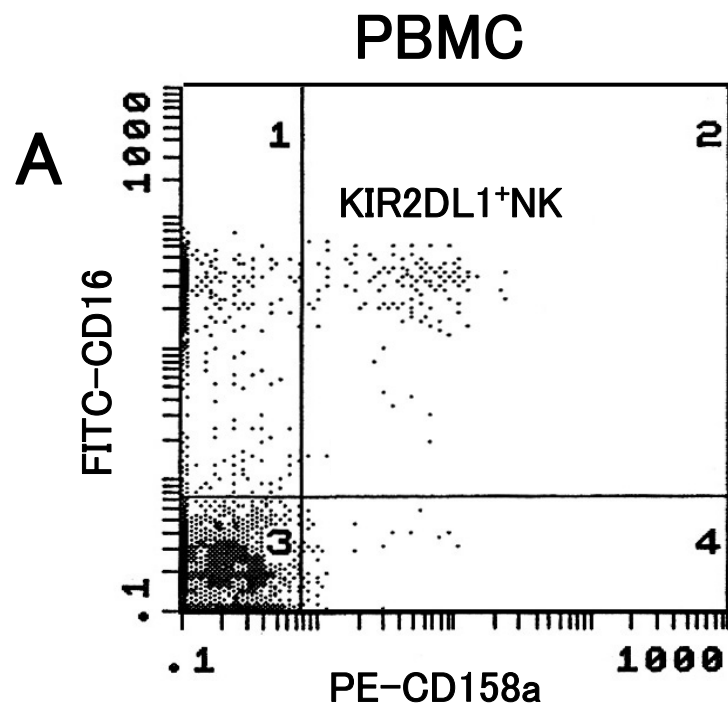
### A. PBMC



### B. PPMC



$$\text{ICAM-1 intensity ratio} = b/a$$



**Table Percentage of antigen-positive cells reacting with mAb in PBMC and PFMC from patients with or without endometriosis**

mAb	PBMC				PFMC			
	Without endometriosis (%)	Endometriosis (%)		<i>P</i> value	Without endometriosis (%)	Endometriosis (%)		<i>P</i> value
		early	advanced			early	advanced	
CD3	52.5±11.2	49.4±15.0	47.3±15.9	NS	35.3±14.7	34.7±20.6	40.2±18.9	NS
CD4	42.8±6.5	38.8±9.8	36.7±13.1	NS	55.5±17.6	48.9±24.8	52.2±18.0	NS
CD8	34.2±7.8	33.2±6.8	30.1±9.6	NS	34.6±12.4	35.6±12.7	39.7±17.7	NS
CD19	8.4±3.6	11.6±3.2	9.8±4.1	NS	3.9±4.7	9.7±17.6	12.3±17.7	NS
CD16	26.9±11.2	28.8±13.2	24.9±11.5	NS	12.0±6.3	13.1±4.4	13.7±6.1	NS
CD14	16.6±10.3	17.9±10.2	17.1±8.6	NS	42.3±19.9	44.3±15.9	43.0±20.4	NS

*Note:* mAb = monoclonal antibodies. PBMC = peripheral blood mononuclear cells. PFMC = peritoneal fluid mononuclear cells. Values are means ± SD. NS = not significant.

